

**This electronic collection of documents is provided  
for the convenience of the user  
and is Not a Certified Document –**

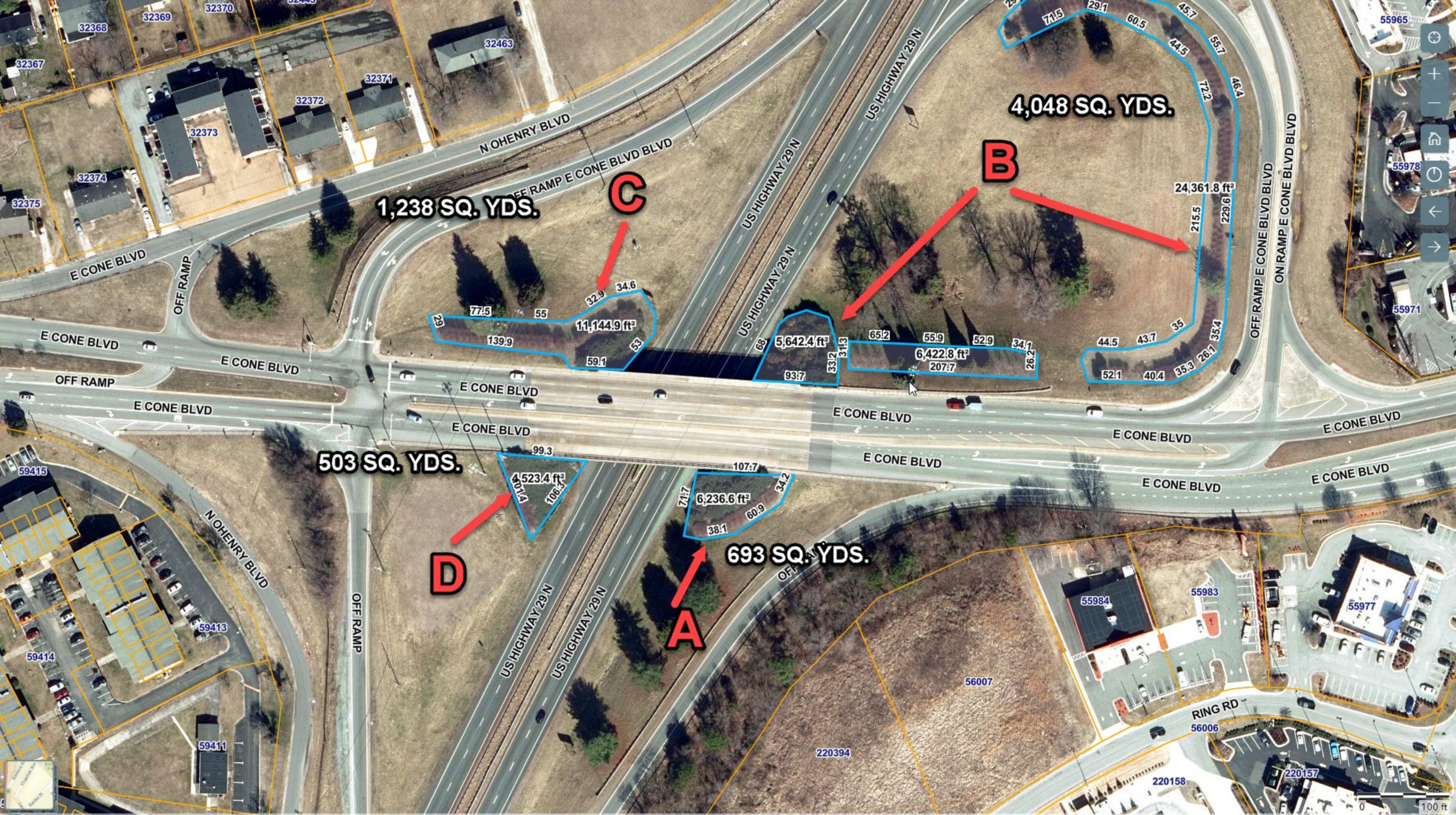
**The documents contained herein were originally issued  
and sealed by the individuals whose names and license  
numbers appear on each page, on the dates appearing  
with their signature on that page.**

**This file or an individual page  
shall not be considered a certified document.**

# HWY 29 N. / 16TH ST. INTERCHANGE

3,113 SQ. YDS. TOTAL





**1,238 SQ. YDS.**

**4,048 SQ. YDS.**

**503 SQ. YDS.**

**693 SQ. YDS.**

**C**

**B**

**D**

**A**

11,144.9 ft<sup>2</sup>

5,642.4 ft<sup>2</sup>

6,422.8 ft<sup>2</sup>

523.4 ft<sup>2</sup>

6,236.6 ft<sup>2</sup>

32368

32369

32370

32367

32371

32372

32373

32374

32375

32463

55965

55978

55971

59415

59413

59414

59411

55984

55983

55977

56007

220394

220158

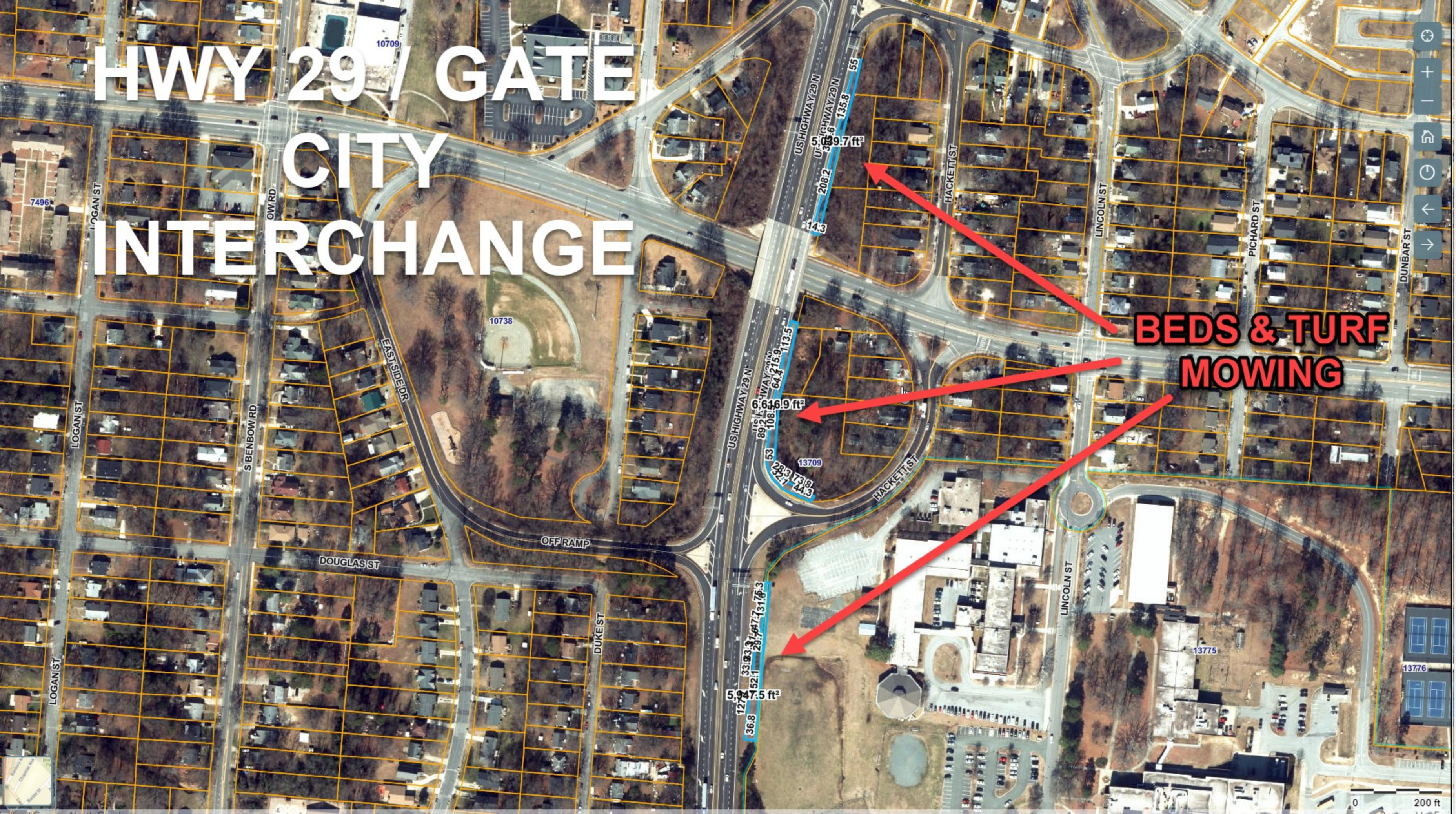
220157

56006

100 ft

# HWY 29 / GATE CITY INTERCHANGE

**BEDS & TURF MOWING**



5.399.7 ft<sup>2</sup>

6.646.9 ft<sup>2</sup>

5.947.5 ft<sup>2</sup>

# HWY 29 / E. MARKET ST INTERCHANGE

**TURF MOWING**

**C**  
523 SQ. YDS.

**B**  
599 SQ. YDS.

**D**  
330 SQ. YDS.

**A**  
356 SQ. YDS.



# HWY 29 / MCCONNELL RD BRIDGE BEDS

**B**

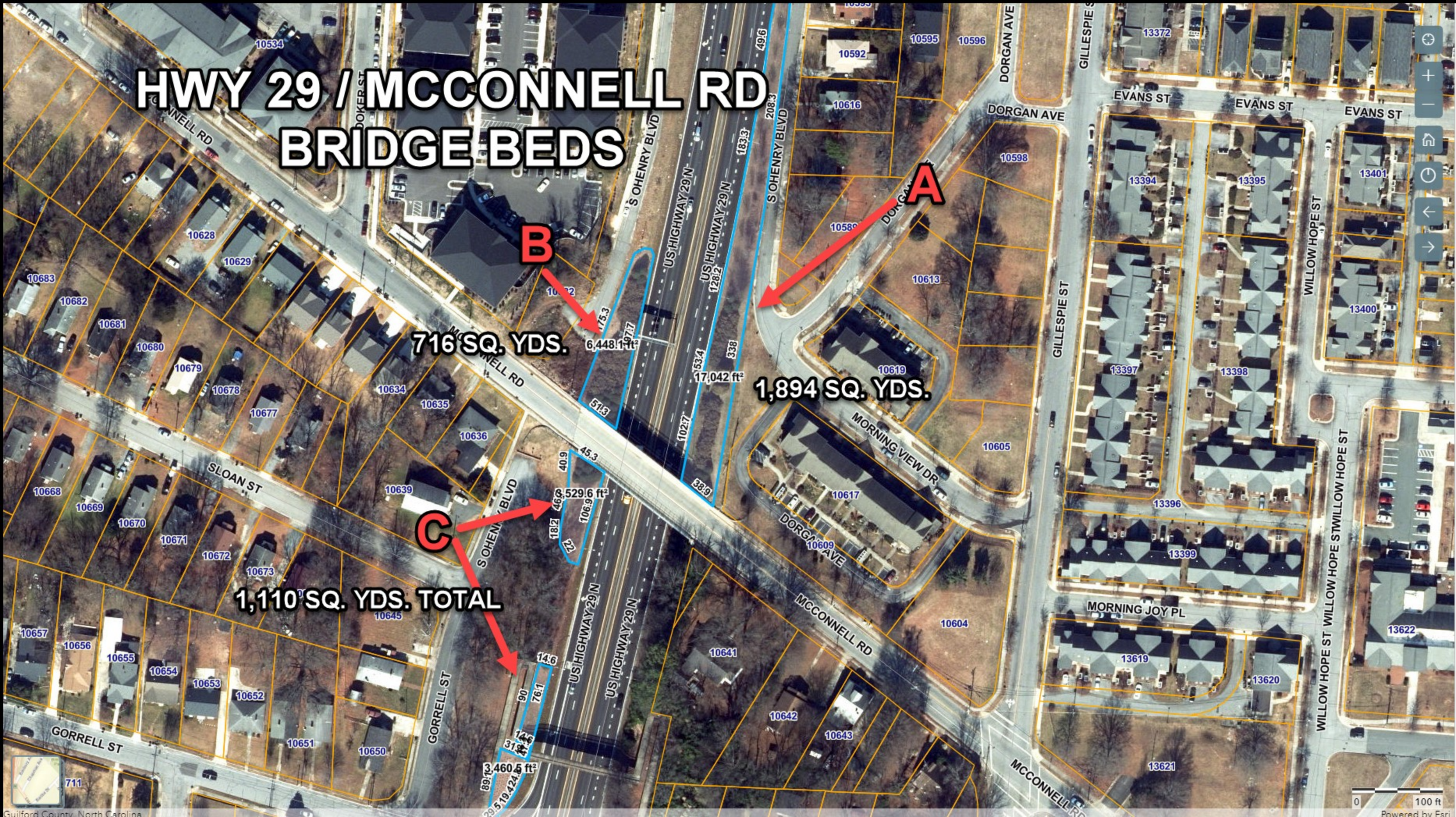
716 SQ. YDS.

**A**

1,894 SQ. YDS.

**C**

1,110 SQ. YDS. TOTAL



# HWY 29 O'HENRY TURF MOWING

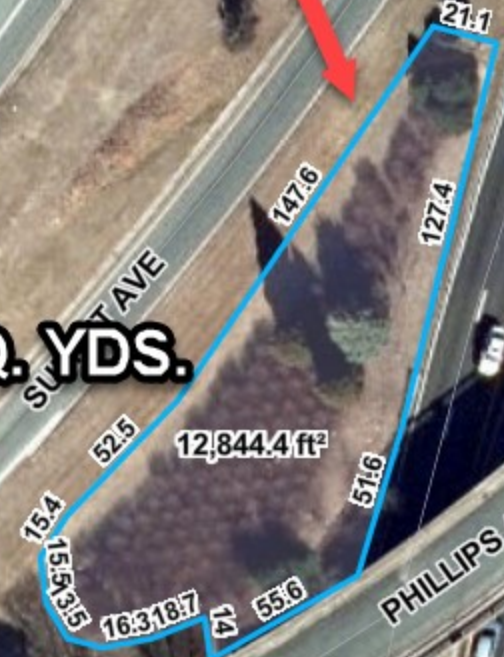
## TURF MOWING



# HWY 29 / PHILLIPS AVE. BED

1,427 SQ. YDS.

**A**



SUMMIT AVE  
SUMMIT AVE

US HIGHWAY 29 N  
US HIGHWAY 29 N

PHILLIPS AVE

OFF RAMP

18647

18654

18650

18653

18651

RYAN ST

N HENRY BLVD

US HIGHWAY 29 N

US HIGHWAY 29 N

N HENRY BLVD

18686

18689

18671

BALL ST

0 60 ft

Powered by Esri



Guilford County, North Carolina

# TURF MOWING



33703

33381

33382

33383

US HIGHWAY 29 N

US HIGHWAY 29 N

US HIGHWAY 29 N

POST ST

POST ST

SULLIVAN ST

SULLIVAN ST

SULLIVAN ST

US HIGHWAY 29 N

US HIGHWAY 29 N

33441

33442

33443

33454

10222

33453

ON RAMP

OFF RAMP

38.9

18.1

25

37.9

30.2

20.5

20.2

32.1

128.9

4,165.8 ft<sup>2</sup>

0 60 ft

Powered by Esri



# HWY 29 / WENDOEVER INTERCHANGE

**TURF AREAS TO MOW**

**A**  
1,537 SQ. YDS.  
TOTAL

33849  
33869  
33884  
33885  
3,766.4 ft  
15.6 36 25.1  
25.8 57.7 31.7 14.5

18.6 4.7  
35.1  
19.7 7.8 4.8 14.5  
10,066.9 ft<sup>2</sup>  
30.7 43.7 40.1  
29.3 75 13.7  
29.8 8

19.3 31.7  
22.6 27.5 18.2 25  
6,273.3 ft<sup>2</sup>  
159.8  
US HIGHWAY 29 N  
US HIGHWAY 29 N

47.2 24.8 24.6 28.6 31.3  
5,803 ft<sup>2</sup>  
137.1  
19.4 31.8 26.1 31.3 42.2  
RAMP

33748 33765 33753 33758  
33752 33764  
33751 33763  
33762  
33754 33761  
33768  
33739

ARNOLD ST

33745

US HIGHWAY 29 N  
US HIGHWAY 29 N  
6,456.2 ft<sup>2</sup>  
160.3  
16.4 29 28.7 21.9 16 36.5  
42.7 11 38.7 19.3 8.1 36.3  
RAMP

33458

33459

TUCKER ST

33465

33472

33466

334

